

## GAIN FROM OUR EXPERIENCE.



### SARAH

Combining an international teaching background with a deep understanding of canine rehabilitation and training, Sarah loves sharing the benefits of dog-assisted learning in school settings.



### ALISON

With a passion for teaching how to empower adults to positively impact students, Alison ensures your team is equipped for success by demonstrating strategies for growth and well-being.



### LOUISE

With a lifetime of experience in the health sector, Louise combines her passion for animals and young people with expertise in Information Management. Her commitment to AAT policy and procedures ensures the highest standards in the industry.

## INNOVATIVE EDUCATOR PACKAGE

It is a comprehensive professional learning experience designed specifically for educators interested in Dog Assisted Learning. This package blends face-to-face workshops, flexible online learning, and an active educators' community, all supported by direct access to experienced mentors.

### Over four engaging modules, participants will:

- Gain practical skills and confidence to integrate therapy dogs into school settings safely.
- Explore the educational and well-being benefits of animal-assisted learning.
- Learn legal, ethical, and best practice frameworks for therapy dog programs.
- Access a wealth of resources and ongoing support through interactive online sessions and community discussions.

### Who should attend?

- Teachers, school leaders, and wellbeing staff
- Education support staff interested in animal-assisted learning
- Anyone seeking to enrich school wellbeing and engagement initiatives.

### Time Investment / PD hours

- 4 workshop hours per term or 1 full day
- 30 mins a week online learning components\*
- 30 minutes a week educators community\*



### This is Not a Therapy Animal Certification Course

This course is a professional learning experience for educators and school leaders, providing foundational knowledge in animal-assisted education but does not result in therapy animal or handler certification.

Our aim is to equip your school community with the understanding and resources needed to make informed decisions about integrating therapy dogs into your environment in the future. By the end of this course, you'll be empowered to advocate for high standards of animal-assisted learning, ensuring the welfare of both students and therapy animals.



## THIS PACKAGE INCLUDES:

### Face-to-Face Workshops:

Hands-on, practical sessions are delivered at your school, allowing school staff to work directly with therapy dogs and experienced mentors. These workshops focus on building real-world skills and confidence in animal-assisted education.

### Online Learning Components\*:

Participants have 24/7 access to a comprehensive suite of online resources, so learning can happen at your own pace and convenience throughout the term.

### Educators' Community & Meetings\*:

Join a supportive community of fellow educators through regular online meet-up sessions. Up to 10 participants are chosen for personalised feedback, and all have the opportunity to engage in live Q&A and interactive discussions on course topics.

\*only available to The Advocates

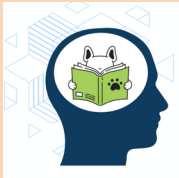
# YOU WILL LEARN

These learning objectives are to equip school staff and educators with the knowledge, practical skills, and confidence to safely and effectively integrate therapy dogs into schools—enhancing student engagement, wellbeing, and classroom culture.



## Module 1: Canines and Classrooms

- Understand how to integrate therapy dogs into educational settings.
- Learn strategies to boost student engagement and create a positive classroom atmosphere using dog-assisted learning.



## Module 2: Canines and Pedagogy

- Explore the pedagogical benefits of dog-assisted education.
- Enrich teaching methods and develop practical approaches for incorporating therapy dogs into lesson delivery.



## Module 3: Canines and Emotional Growth

- Examine the impact of therapy dogs on students' emotional regulation and overall well-being.
- Develop skills to facilitate safe, supportive, and positive student experiences.



## Module 4: Canines and School Spirit

- Utilise a wealth of resources to support animal-assisted learning.
- Engage in open discussions, share insights, and participate in a professional community for ongoing support and reflective practice.

# PARTICIPANT TIERS

## The Advocates

A select group of up to 10 staff who are highly invested in dog-assisted learning.

Advocates will:

- Sit at the front during workshops and receive hands-on opportunities to handle therapy dogs.
- Access all online course components, including the educators' community and interactive meetings.
- Receive personalised feedback and support from our experienced mentors.
- Be expected to demonstrate both the passion and the time commitment needed to deepen their expertise.

## The Observer

Staff who are interested in learning more about dog-assisted learning, but may not be ready to take on an active role.

Observers will:

- Be welcome to attend and watch the face-to-face workshops.
- Not be required or expected to participate in activities or online components.

This structure ensures your most passionate staff receive the full benefit of the program, while also allowing others to learn at their own pace and comfort level.

# CONTACT

For registration details and more information contact [admin@CanineComprehension.com.au](mailto:admin@CanineComprehension.com.au)



# TERMS AND CONDITIONS

## 1. Course Nature & Certification

This course is a professional learning experience and does not provide therapy animal or handler certification. Participation equips educators with foundational knowledge and skills for dog-assisted learning, but does not qualify participants or their school as certified therapy dog handlers or providers.

## 2. Participant Eligibility & Tiers

Up to 10 staff per school may participate as Advocates (full access, hands-on, online community).

There is no limit on the Additional staff who may attend as Observers (face-to-face workshop attendance only, no hands-on or online access). Advocates must demonstrate a commitment to active participation and professional conduct.

## 3. Attendance & Participation

Advocates are expected to attend all face-to-face and online sessions and actively participate in course activities.

Observers are welcome to attend workshops but are not required to participate.

## 4. Privacy & Data Protection

All participant information will be managed in accordance with Canine Comprehension's privacy policy.

Any personal or school data shared during the program will be kept confidential and used only for program purposes.

## 5. Professional Conduct

All participants must treat staff, mentors, therapy dogs, and each other with respect at all times.

Aggressive, abusive, or inappropriate behaviour will not be tolerated and may result in removal from the program.

## 6. Child Safety & Compliance

All Canine Comprehension staff and mentors hold current Working With Children Checks and comply with Child Safe Standards. Schools are responsible for ensuring all participants adhere to their own child safety and supervision policies during workshops.

## 7. Animal Welfare

The welfare and safety of therapy dogs is paramount. All activities must adhere to ethical guidelines and best practices for animal-assisted education. Participants must follow all instructions regarding safe and respectful interactions with therapy dogs.

## 8. Emergency Protocols

Canine Comprehension is not an emergency service. In case of emergency or risk of harm, participants must follow school procedures and contact emergency services (000) as appropriate.

## 9. Session Conditions

Schools are responsible for providing a safe, comfortable, and appropriate space for workshops (e.g., quiet room, space for group activities, access to outdoor area if required). No other animals should be present during workshops unless approved in advance.

## 10. Changes, Cancellations & Refunds

Canine Comprehension reserves the right to reschedule or cancel workshops due to unforeseen circumstances (e.g., illness, extreme weather). Any changes to terms and conditions will be communicated in writing. Refunds or credits may be available according to the company's cancellation policy.

## 11. Intellectual Property

Course materials and resources provided are for participant use only and may not be shared, copied, or distributed without permission.

## 12. Agreement & Acknowledgement

By enrolling in the Innovative Educator package, participants and schools agree to abide by these terms and conditions.